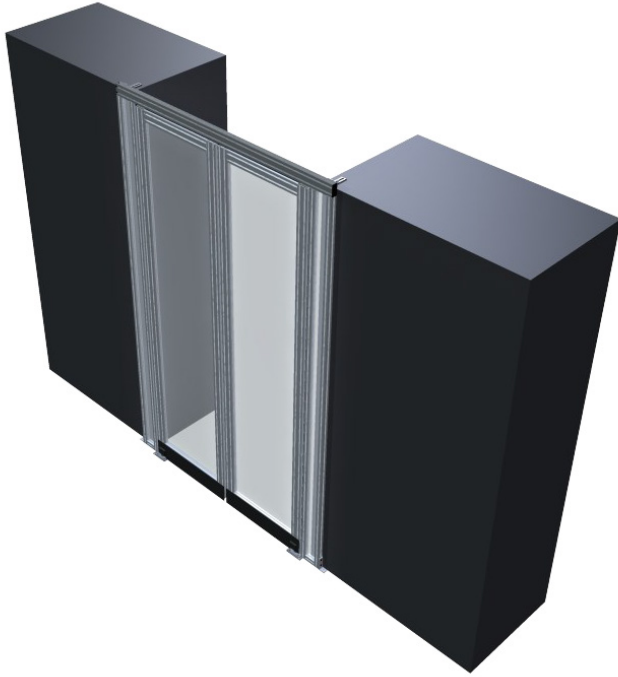


PIVOT DOORS



DOUBLE PIVOT DOORS



SINGLE PIVOT DOOR

Utilize aisle containment doors with Great Lakes ES cabinets to create an efficient data center airflow strategy. Doors mount to cabinets or the floor and install across one or two rows of cabinets. Building obstructions, narrow aisles, uneven cabinet heights, or cabinets from another manufacturer?

No problem—containment products, including ceiling panels and rigid walls, are built to fit the application!

Custom, built to order to ensure the best fit, function and installation

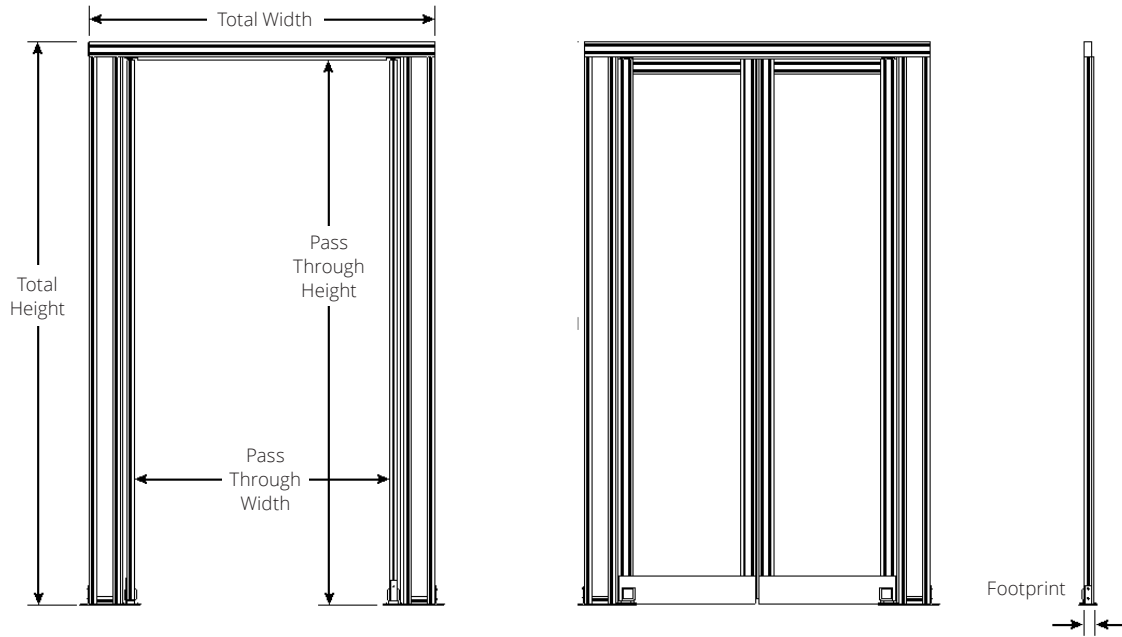
FEATURES:

- No threshold design
- Double acting closer with adjustable tension
- Sturdy aluminum frame
- Doors hold open at 85°

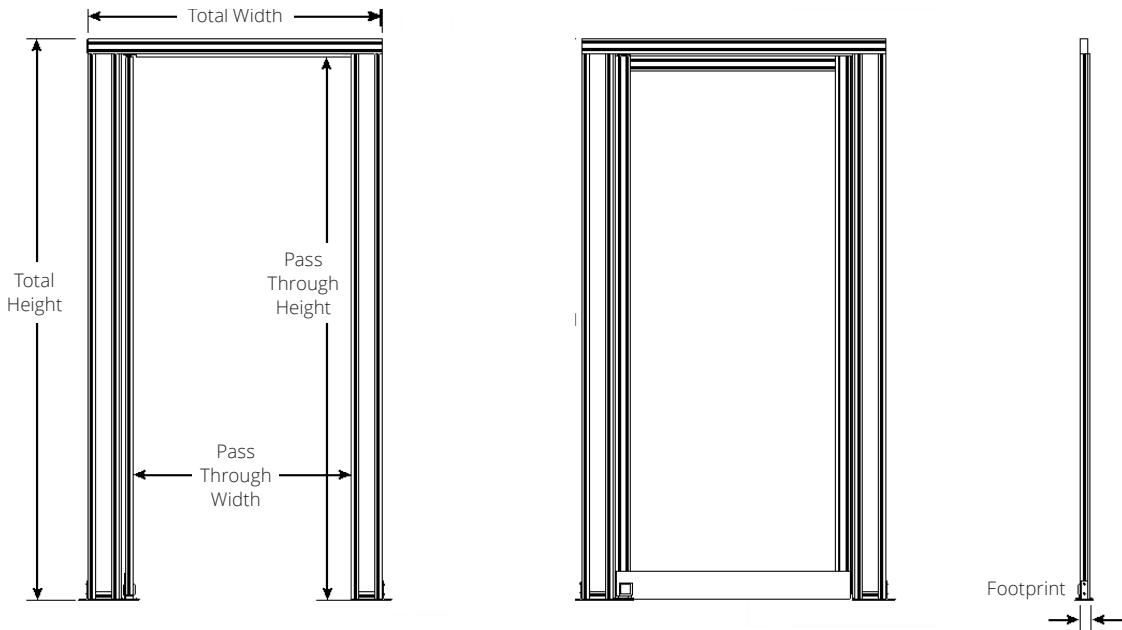
DOOR OPTIONS:

- Clear or corrugated panels
- Clear/black anodize frame
- Bottom kick plate
- Aluminum handle
- Free standing
- Custom frame colors
- Other customizations

DOUBLE PIVOT DOORS



SINGLE PIVOT DOOR



Size and Finish	Double	Single	Panel Options	Test	Result
Door Hinge*	Up to 98"	Up to 98"	Standard Clear Polycarbonate	ASTM E-84	Class B
Door Width*	Up to 96"	Up to 80"		ASTM D635	CC1
Pass Through Width	Up to 39 7/8"	Up to 34"		ASTM D2843	<75
Footprint	1 3/16"	1 3/16"	Premium Clear Polycarbonate	UL 94	V-O
Manufacturing Tolerance	(+/-) 1/32"	(+/-) 1/32"		ASTM D635	CC1
*specify size when ordering				ASTM D2843	Passed
Door and Frame				FM 4910	Passed
Material	6560 T-6 Temper Alum.		Clear PVC	UL 94	V-O
Tensile Strength	30,000 psi			ASTM E-84	Class A

MEASUREMENTS NEEDED:

Door Height - From ground to top of door. Typically top of door will be sized 1.1875" taller than the cabinets for integration with overhead containment.

Door Width - From frame edge to frame edge. Make frame width at least 2.5" wider than aisle width to ensure aisle is fully contained.