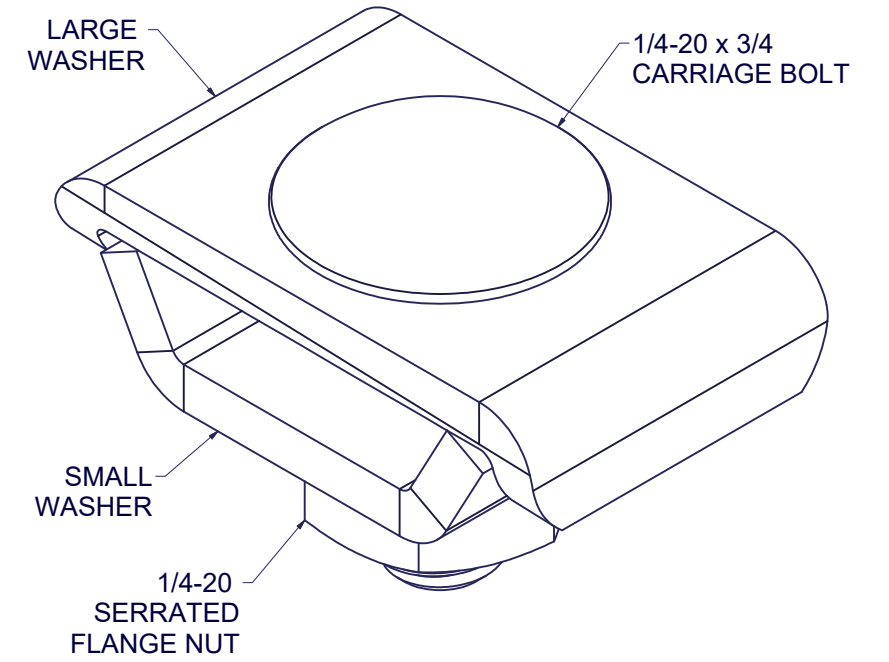
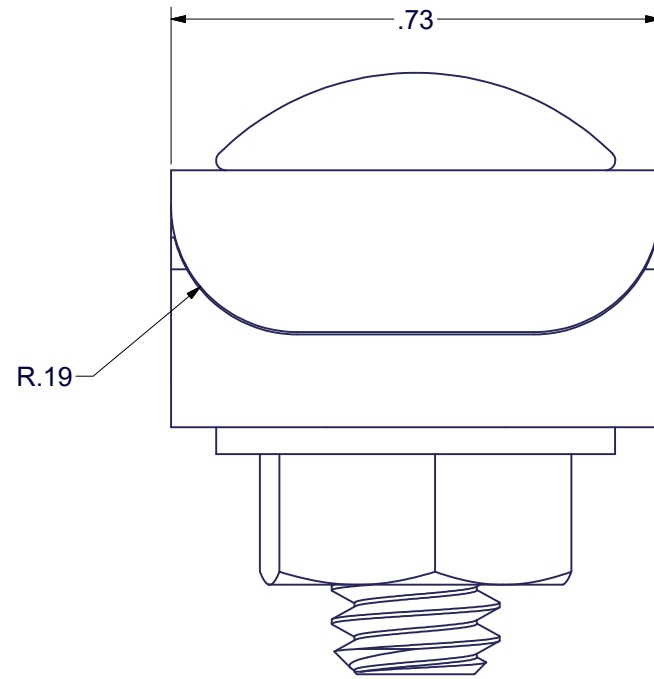
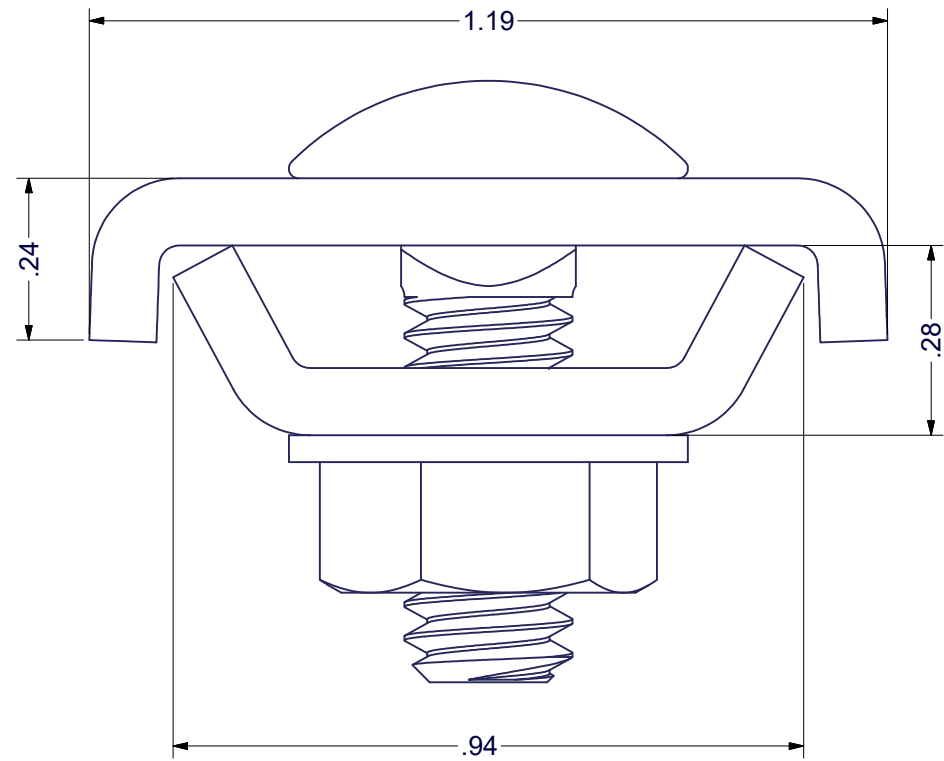


REVISION HISTORY			
REV	DESCRIPTION	DATE	APPROVED
0	ECO-07965	9/4/2020	VL



**SPECIAL NOTES:**  
 1) PART NUMBER INCLUDES PACK OF (50)

EST. WEIGHT :  
 N/A



INTERPRET DRAWING PER ASME Y14.5M-1994
DIMENSIONAL LIMITS APPLY AFTER APPLICATION OF FINISH
DRAWING NOT TO SCALE
TOLERANCE UNLESS OTHERWISE NOTED:
ANGULAR +/- .1°
.XXXX +/- .010
.XXX +/- .015
.XX +/- .030
.X FOR REF. ONLY
UNLESS OTHERWISE SPECIFIED ALL DIMENSIONS ARE IN INCHES

**NOTICE:**

Use of this document is subject to a confidentiality and nondisclosure agreement with Great Lakes Data Racks & Cabinets and may not be reproduced, disclosed or utilized in whole or in part without prior written authorization from Great Lakes.

PART NUMBER: GL-SPLKT	TITLE: SPLICE KIT, CARRIAGE BOLT NUT AND FORMED WASHERS, KIT OF 50
MATERIAL TYPE: CRS	GREAT LAKES DATA RACKS & CABINETS P.O. BOX 551 EDINBORO, PA 16412 PHONE (814) 734-7303 FAX (814) 734-3907 E-MAIL info@greatcabinets.com
MATERIAL GAUGE: ZINC	
FINISH: ZINC	
DRAWN VL	DATE 9/8/2020
CHECKED & APP. CND	DATE 9/14/20
DWG NO: 1032567	REV 0
	SHEET: 1 OF 1